

GHASR BRICK GROUP

New Collection 2018 - 19



گروه کارخانجات آجر نسوز نما قصر
Ghasr Refractory Brick Manufacturers Group





Code: S11 dimensions : 70*310*27



Code: S01 dimensions : 55*265*27



Code: S09 dimensions : 70*310*27



Code: S03 dimensions : 55*265*27



Code: S12 dimensions : 70*310*27



Code: S13 dimensions : 70*310*27



Code: S08 dimensions : 70*310*27



Code: S10 dimensions : 70*310*27



Code: S02 dimensions : 55*265*27



Code: S16 dimensions : 70*310*27



Code: S06 dimensions : 55*265*27



Code: S17 dimensions : 70*310*27



Code: S15 dimensions : 70*310*27



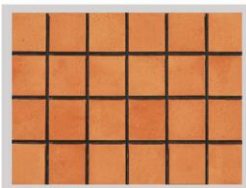
Code: S20 dimensions : 70*310*27



Code: S18 dimensions : 70*310*27



Code: S19 dimensions : 70*310*27



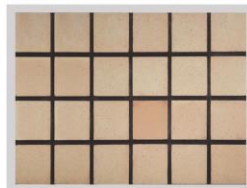
Code: S13 dimensions : 100*100*27



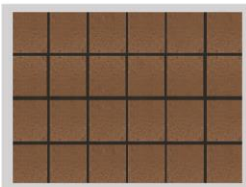
Code: S01 dimensions : 100*100*27



Code: S06 dimensions : 100*100*27



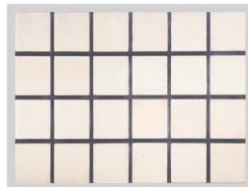
Code: S12 dimensions : 100*100*27



Code: S10 dimensions : 100*100*27



Code: S11 dimensions : 100*100*27



Code: S09 dimensions : 100*100*27





Code: S06 dimensions : 200*200*27



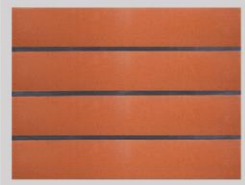
Code: S01 dimensions : 200*200*27



Code: S13 dimensions : 200*200*27



Code: S15 dimensions : 200*200*27



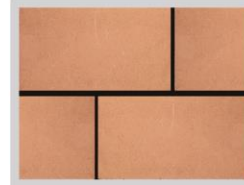
Code: S15 dimensions : 100*600*27



Code: S15 dimensions : 200*400*27



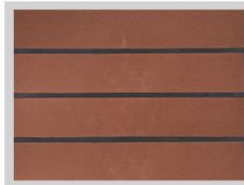
Code: S18 dimensions : 200*400*27



Code: S13 dimensions : 200*400*27



Code: S13 dimensions : 100*600*27



Code: S18 dimensions : 100*600*27



Code: S19 dimensions : 100*600*27



Code: S20 dimensions : 100*600*27



Code: S11 dimensions : 100*600*27



Code: S10 dimensions : 100*600*27



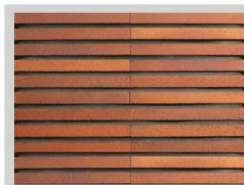
Code: S01 dimensions : 100*600*27



Code: S09 dimensions : 100*600*27



Code: S17 dimensions : 35*310*27



Code: S08 dimensions : 35*310*27



Code: S09 dimensions : 35*310*27



Code: S03 dimensions : 35*310*27



Code: S16 dimensions : 35*310*27



Code: S10 dimensions : 35*310*27



Code: S01 dimensions : 35*310*27



Code: S11 dimensions : 35*310*27



Code: S15 dimensions : 50*600*27



Code: S20 dimensions : 50*600*27



Code: S13 dimensions : 50*600*27



Code: S19 dimensions : 50*600*27



Code: S18 dimensions : 50*600*27



Code: S01 dimensions : 50*600*27



Code: S06 dimensions : 50*600*27



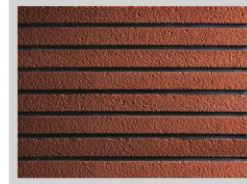
Code: R15 dimensions : 50*600*27



Code: R20 dimensions : 50*600*27



Code: R19 dimensions : 50*600*27



Code: R18 dimensions : 50*600*27



Code: R13 dimensions : 50*600*27



Code: R01 dimensions : 50*600*27



Code: R06 dimensions : 50*600*27



Code: R01 dimensions : 35*310*27



Code: R09 dimensions : 35*310*27



Code: R10 dimensions : 35*310*27



Code: R06 dimensions : 35*310*27



Code: R16 dimensions : 35*310*27



Code: R11 dimensions : 35*310*27



Code: R16 dimensions : 70*310*27



Code: R11 dimensions : 70*310*27



Code: R09 dimensions : 70*310*27



Code: R10 dimensions : 70*310*27



Code: R08 dimensions : 70*310*27



Code: R03 dimensions : 70*310*27



Code: R13 dimensions : 200*200*27



Code: R15 dimensions : 200*200*27



Code: R06 dimensions : 200*200*27



Code: R01 dimensions : 200*200*27



Code: R19 dimensions : 100*600*27



Code: R13 dimensions : 100*600*27



Code: R15 dimensions : 100*600*27



Code: R01 dimensions : 100*600*27



Code: R15 dimensions : 200*400*27



Code: R13 dimensions : 200*400*27



Code: R18 dimensions : 100*600*27



Code: R20 dimensions : 100*600*27



Code: MW06 dimensions : 100*600*27



Code: MW19 dimensions : 100*600*27



Code: MW19 dimensions : 100*600*27



Code: MW06 dimensions : 100*600*27



Code: R01 dimensions : 35*310*27 25*265*27



Code: R06 dimensions : 35*310*27 25*265*27



Code: CA01 dimensions : 100*100



Code: CA06 dimensions : 100*100



Code: CA13 dimensions : 100*100



Code: CA16 dimensions : 100*100



Code: C01 dimensions : 55*265



Code: C11 dimensions : 70*310



Code: C06 dimensions : 55*265



Code: C10 dimensions : 70*310



Code: C10 dimensions : 70*70



Code: CA34 dimensions : 70*70



Code: CA33 dimensions : 70*70



Code: C01 dimensions : 70*70



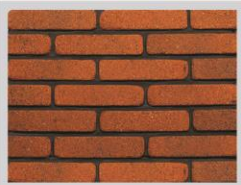
Code: CA12 dimensions : 100*100



Code: C06 dimensions : 70*70



Code: C11 dimensions : 70*70



Code: A06 dimensions : 55*265*27



Code: A06 dimensions : 70*310*27



Code: A12 dimensions : 70*310*27



Code: A16 dimensions : 70*(200-60)*27



Code: A01 dimensions : 55*265*27



Code: A33 dimensions : 70*(200-60)*27



Code: A11 dimensions : 70*310*27



Code: A10 dimensions : 70*310*27

► Antique Brick

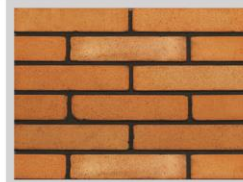


گروه کارخانجات آجر نسوز نما قصر

◀ آجر آنتیک



Code: A15 dimensions : 55*220*27



Code: A13 dimensions : 70*310*27



Code: A16 dimensions : 70*310*27



Code: A15 dimensions : 200*200*27



Code: A13 dimensions : 200*200*27



Code: A01 dimensions : 200*200*27



Code: A06 dimensions : 200*200*27



Code: A12 dimensions : 100*100*27



Code: A13 dimensions : 100*100*27



Code: A01 dimensions : 100*100*27



Code: A06 dimensions : 100*100*27

► Composing Dimensions Brick

◀ آجر ترکیب ابعادی



Code: S06 dimensions : 70*310*27
70*310*50



Code: S01 dimensions : 55*265*27
55*265*50



Code: S11 dimensions : 70*310*27
70*310*50



Code: S10 dimensions : 70*310*27
70*310*50



Code: A01 dimensions : 100*100*27
100*100*50



Code: A06 dimensions : 100*100*27
100*100*50



Code: A13 dimensions : 100*100*27
100*100*50



Code: A12 dimensions : 100*100*27
100*100*50



Code: A01 dimensions : 55*265*27
55*265*50



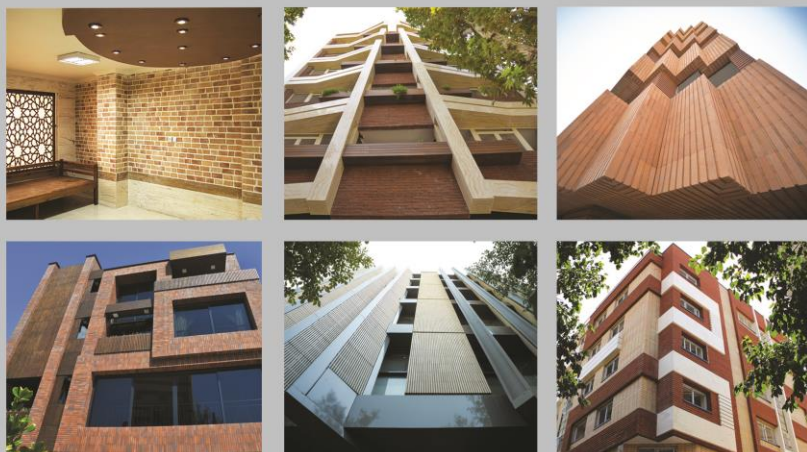
Code: A10 dimensions : 70*310*27
70*310*50



Code: A11 dimensions : 70*310*27
70*310*50



Code: A06 dimensions : 55*265*27
55*265*50



دفتر مرکزی : اصفهان ، اتوبان چمران ، خیابان اشراق شمالی ، جنب سازمان نظام مهندسی
(ده خط) ۳۴۵۹۳۵۱۲ - ۰۳۱ مدیریت بازرگانی و فروش : ۱۶۱۴ ۰۹۱۲۹۰۵
Main Office: Chamran highway, Eshragh st., Next to the Engineering System Org.
Tel : +98 31 34593512 (10 Line) Sales Manager : 0912 905 1614
www.ghasrbrick.ir info@ghasrbrick.ir telegram.me/ghasrbrick

